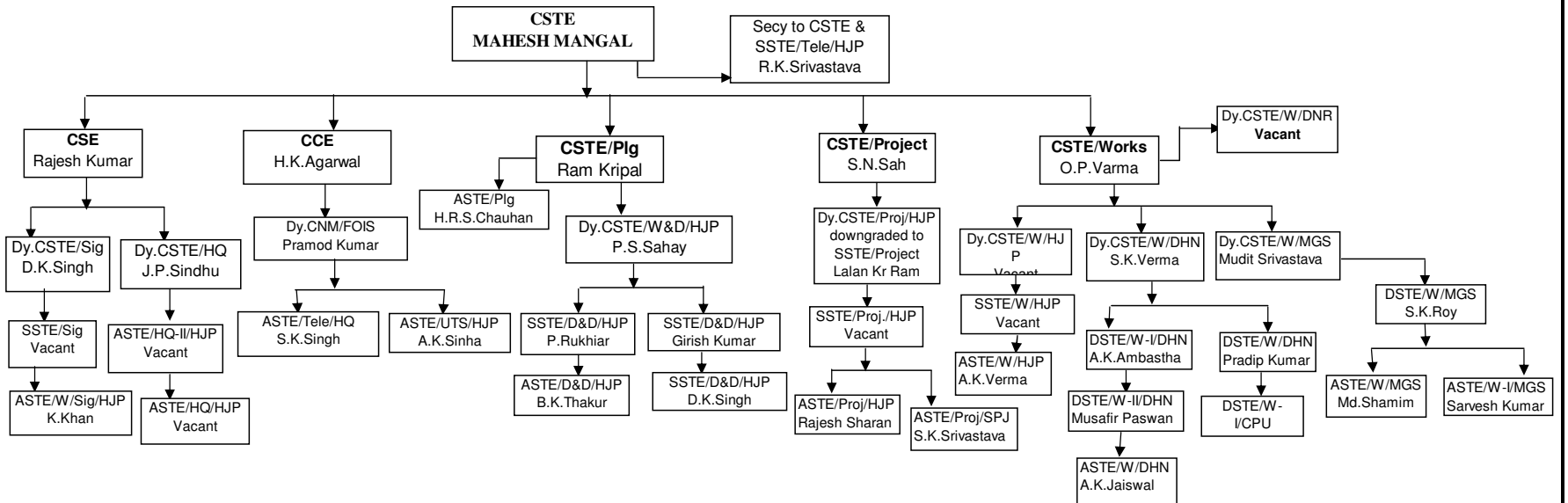
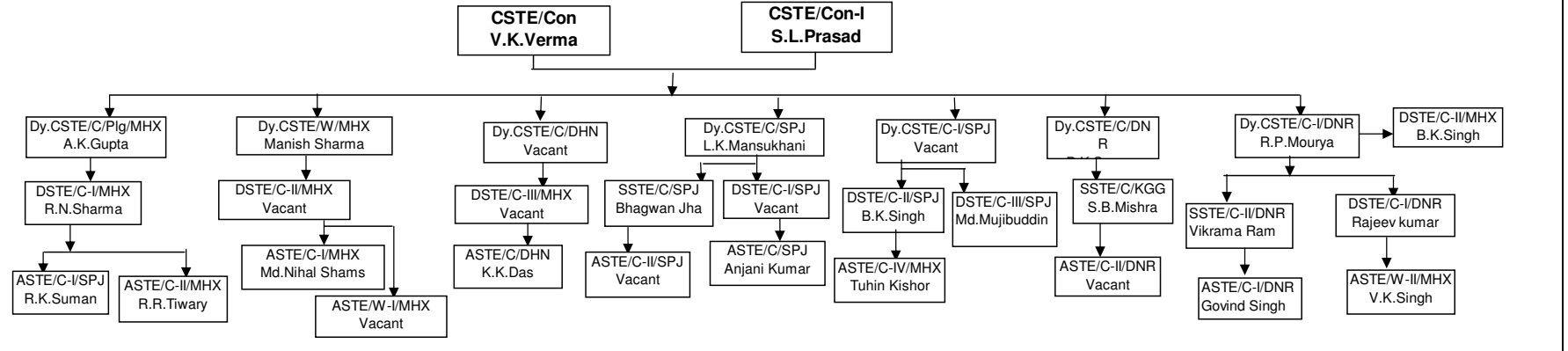


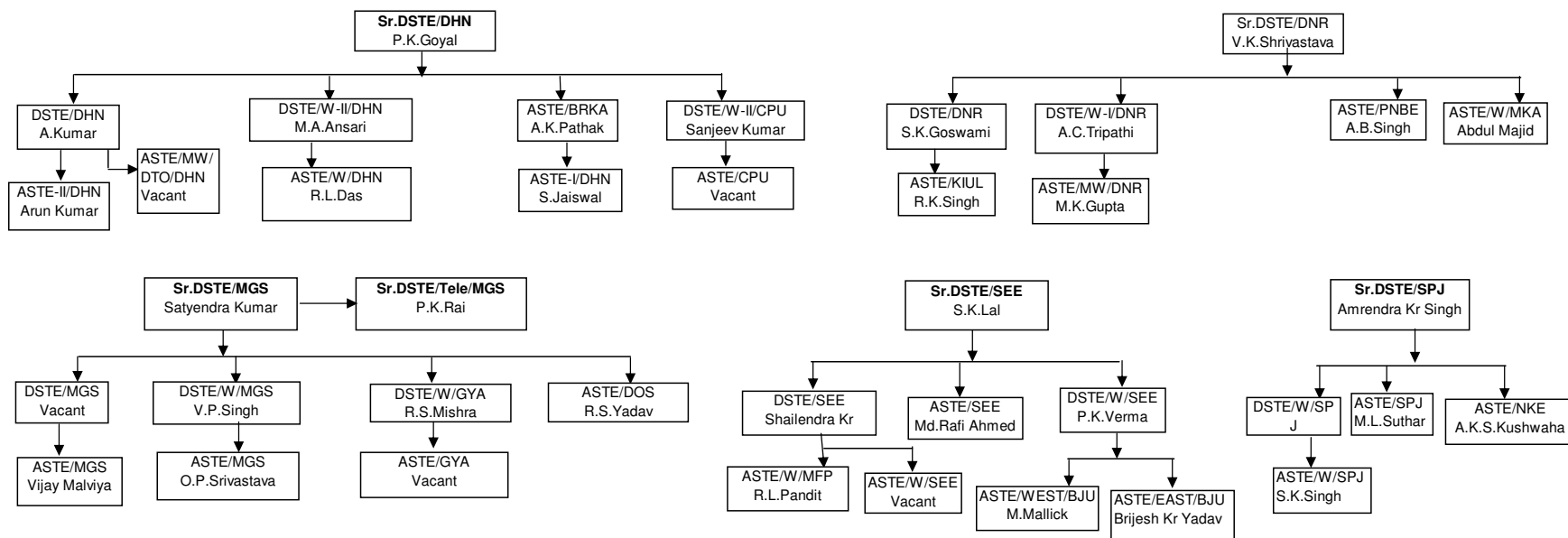
GAZETTED ORGANISATIONAL CHART OF S&T DEPARTMENT OF HQ(open line) as on 12.11.09



GAZETTED ORGANISATIONAL CHART OF S&T/Construction (Workcharge posts) as on 12.11.09



GAZETTED ORGANISATIONAL CHART OF S&T DEPARTMENT OF DIVISIONS as on 12.11.09



Summary

Grade	Sanctioned posts			Vacancy		
	CSTE		CSTE/Con	CSTE		CSTE/Con
	O/L	W/C	W/C	O/L	W/C	W/C
HAG/SAG	4	2	2	0	0	0
SG/JAG	7	10	7	0	3	2
SS	4	20	11	1	2	3
JS	17	20	11	4	3	3
	32	52	31	5	8	8

* Work charge posts shown in blue colour.

Note:-(1) Shri S.A.Minz, Dy.CSTE/Safety working against work charged post of Dy.CSTE/Proj-II/HJP, under CSO/HJP

(2) Shri Ram Krishna, Dy.CSTE/RE/DNR

(3) Shri D.K.Chand, ASTE/Safety working against work charged post, under DSO/SPJ

(4) One work charged Sr.Scale post has been transferred to RDSO/QA/S&T not included in the above.

(5) Shri S.M.S.Shamsi SSTE/WPO under CAO/WPO

(6) Shri Lalan Kr Ram, SSTE/Project/HQ by downgrading the post of Dy.CSTE/Project/HQ.

(7) Shri S.Nagar, Sr.DSO/SEE working against work charge post.

(8) Shri Vijay Pal, ASTE/RE working under Dy.CSTE/RE/DNR

(9) Shri Rsjesh Sharma, ASTE/RE/LKO

(10) Shri Sunil Kr Sinha, ASTE/CORE/ALD

(11) Shri S.N.Ram, ASTE/RE working against under Dy.CSTE/RE/DNR.